



PIE DIFFUSION
4 Rue des Maraîchers, ZAC des Communes
78260 ACHERES
Tél : 01.39.11.61.62, Fax : 01.39.11.72.00
E-mail : piediffusion@piediffusion.com
www.piediffusion.com

Fully Automatic Stencil Cleaning System BMP-750



Application fields of "BMP-750 steel mesh cleaning machine":

- Suitable for cleaning various types of stencils such as steel mesh, copper mesh, microporous mesh, and wafer tray [see the following figure: 1, 2];
- It is also suitable for cleaning circuit boards, fixtures, scrapers and other similar products and appliances [Figure: 3].
- Liquid spray animation [Figure: 4]

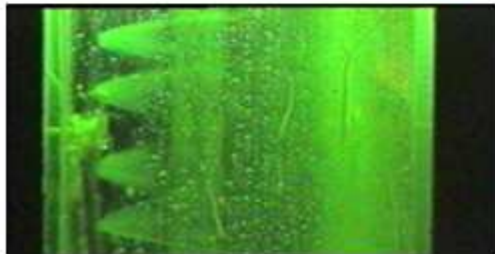
Steel mesh



Copper mesh



PCB/PCBA



The main features of "BMP-750 steel mesh cleaning machine":

→All stainless steel body, beautiful, wear-resistant, corrosion-resistant, and meets environmental protection requirements and standards;

→Fully pneumatic operation, no electricity, no safety hazards such as fire, and has passed EU safety certification;

→High-density isobaric double-sided rotating cleaning nozzle: strong cleaning power and will not damage the tension of the steel mesh; →Three-stage five-layer filtration system, low exhaust pipe design: solvent recycling, low liquid consumption;

→Humanized design: One-button operation and automatic liquid addition and drainage function, the operation is very simple.

→System integration of global high-quality devices: to ensure high quality, stable performance and long service life.

→Replaceable modular controller and quick-plug design, maintenance is also very simple and convenient.



It is completely powered by compressed air without electricity, and there is no safety hazard such as fire.

Air source access port (trachea diameter 12mm)

External air source pressure requirement: 0.45 ~ 0.7 (Mpa) air pressure when the machine is running;

External air source flow requirements: 1200L/Minutes

→ Humanized design, one-key operation, easy to complete the whole process of cleaning and drying



Press the Start button to start work

→ Three-stage filter system, low exhaust port and S-type exhaust pipe design, cleaning liquid is recycled, and the liquid consumption is very small

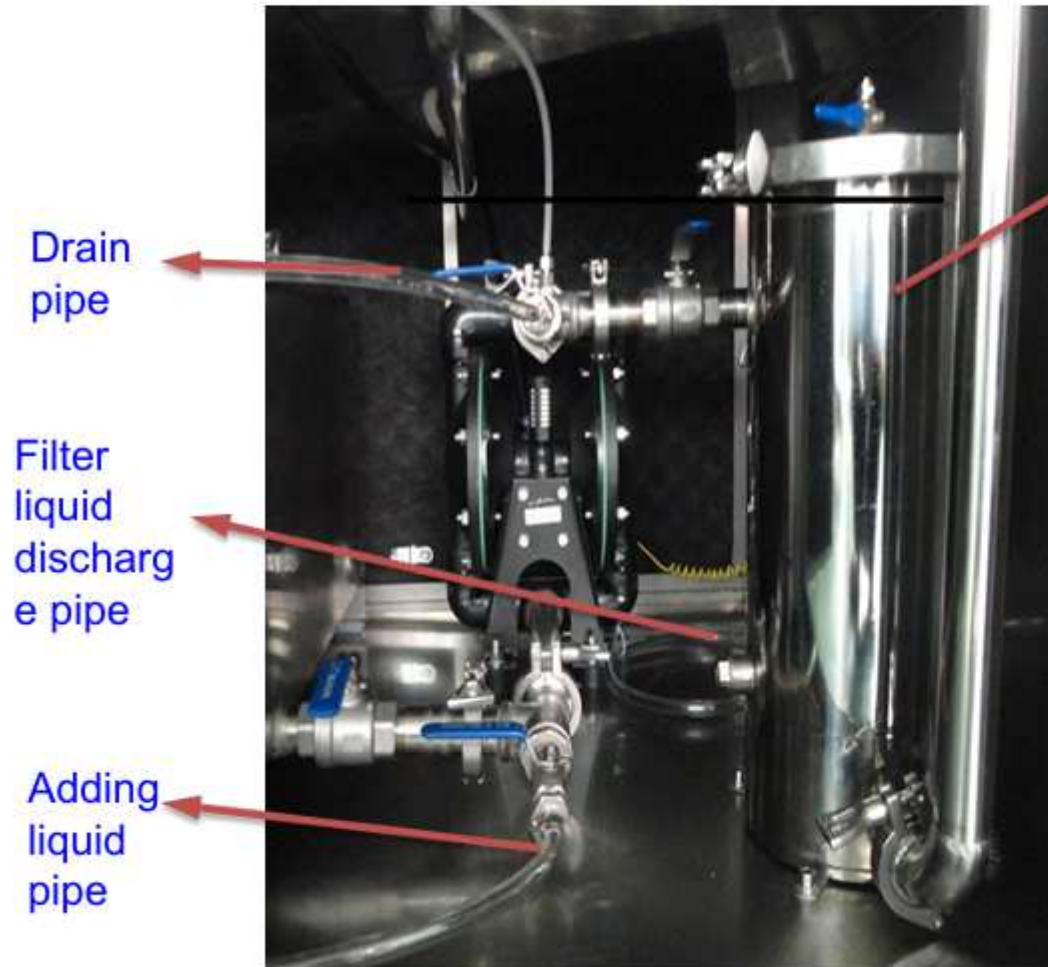


1. The design of S-type exhaust pipe can effectively recover 35% of vaporized liquid;

2. Low exhaust vent position to reduce liquid atomization and volatilization

project	parameter
Cleaning fluid	Suitable for alcohols and water-based solvents
Applicable stencil size	≤29-inch stencil can be cleaned
Cleaning time	1-3Mins
Drying time	1-3Mins
Consumption of cleaning fluid	120ml/Pcs

→The automatic liquid adding and draining system is more conducive to the flexible management of production.



The filter has 3 channels of 0.45UM filter element centralized filtering device, and it is equipped with quick couplings, which is very convenient and quick to assemble.

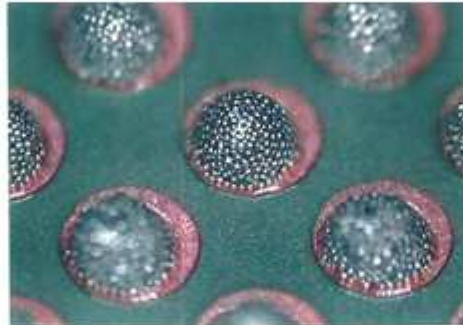
Project	Filtered objects	Filter replacement cycle
First level 10μm	Impurities/labels	12 months
Tired level 0.45μm	Solder paste/ rosin particles	1 ~ 2 months

→ The high-density isobaric double-sided rotating cleaning nozzle has strong cleaning power and does not damage the tension of the steel mesh.

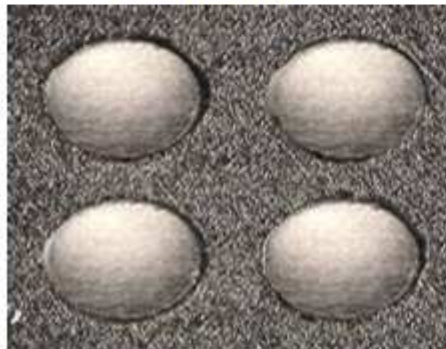
The printed stencil is not cleaned/
cleaned incompletely



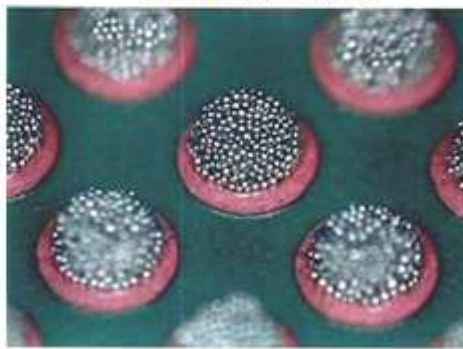
Bad printing



After cleaning

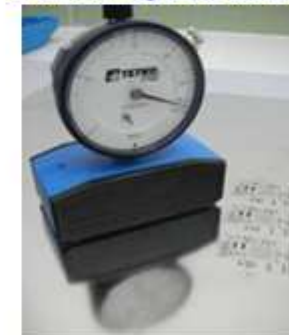


Good printing effect



Double-sided
rotating
cleaning
nozzle

The tension test of the stencil before and
after cleaning is the same



→ Overall optimized structural design



Replace the trachea according to the corresponding number, which is easy to operate.

Product Features:

- The structure and volume of the whole machine are small, which saves space for users;
- Modular structure design, convenient for users to maintain the machine;
- Provide a standard ground wire interface to effectively discharge static electricity;
- The whole machine is in full compliance with the MD, LVD, and EMC directives required by the EU CE

→ **Systematically integrate global high-quality control devices to ensure high quality, stable performance and long service life.**

Pneumatic diaphragm pump
(United States-
Ingersoll Rand)



Pneumatic timer
(United States-
Danaher Hengsrler)



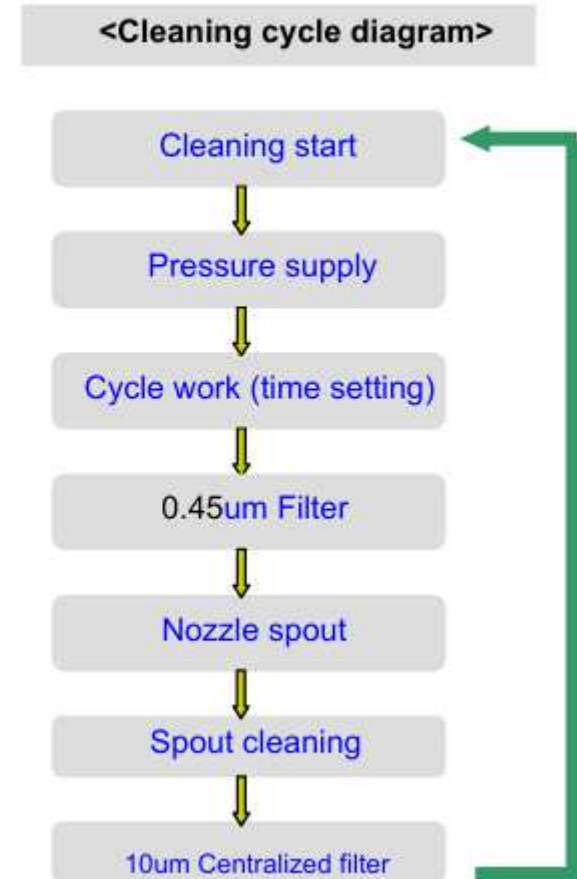
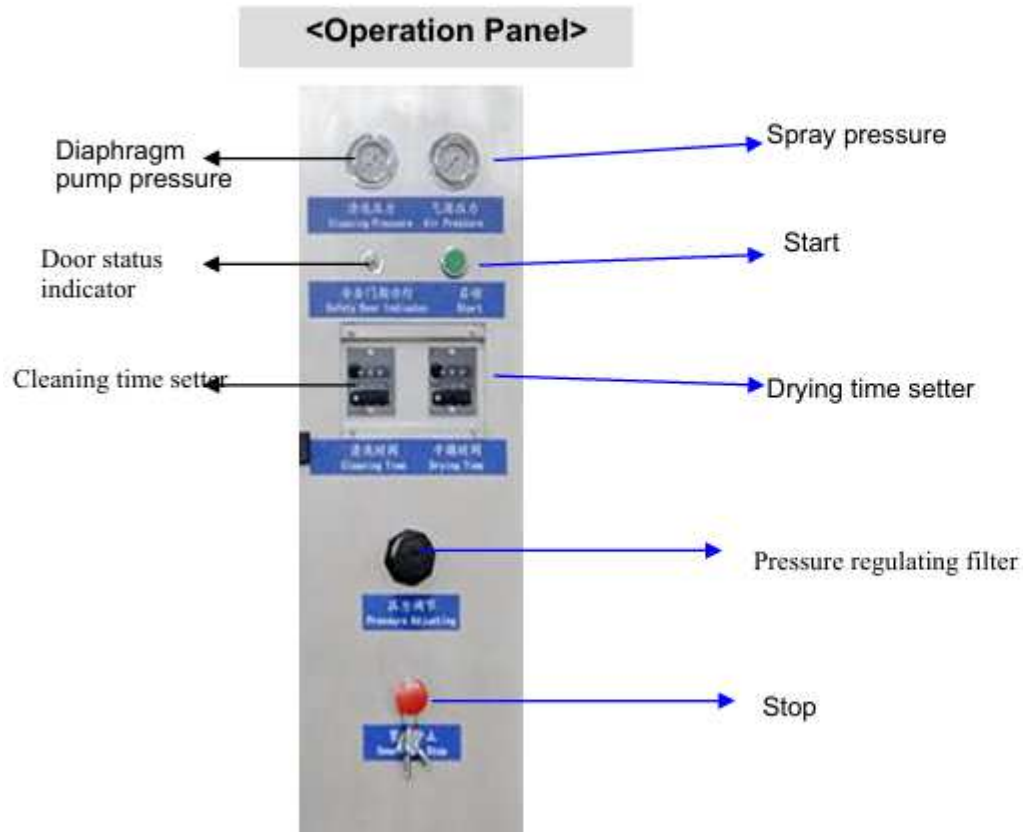
Pneumatic switch, indicator light
(Japan--SMC)



Door handle hand
(United States--
Southco)



"BMP-750 steel mesh cleaning machine" equipment structure diagram and cleaning process:



Main technical parameters of "BMP-750 steel mesh cleaning machine":

Applicable stencil size	750(L) × 750(W) × 40mm(H) 【 Extra large size needs to be customized 】
Maximum volume of liquid tank	42 L(Man)
Optimal liquid usage	22~35 L
Cleaning method	360°Rotary liquid spray cleaning and compressed air drying
Cleaning time	3 ~5 Mins (Solder)
Drying time	3 ~5 Mins
External air source	0.45 ~ 0.7 (Mpa)
Air consumption	(350 ~ 500) L/Minutes
Exhaust port size	Φ100×30mm(H) Maximum gravitational wind speed 3m/see
Filtering system	Primary filter box filtration: 10μm (filter impurities and labels)
	Three-stage filter element filtration: 0.45μm (filter tin balls and rosin particles)
Machine net weight	~230Kg
Machine size	950(L) × 800(W) × 1680mm(H)